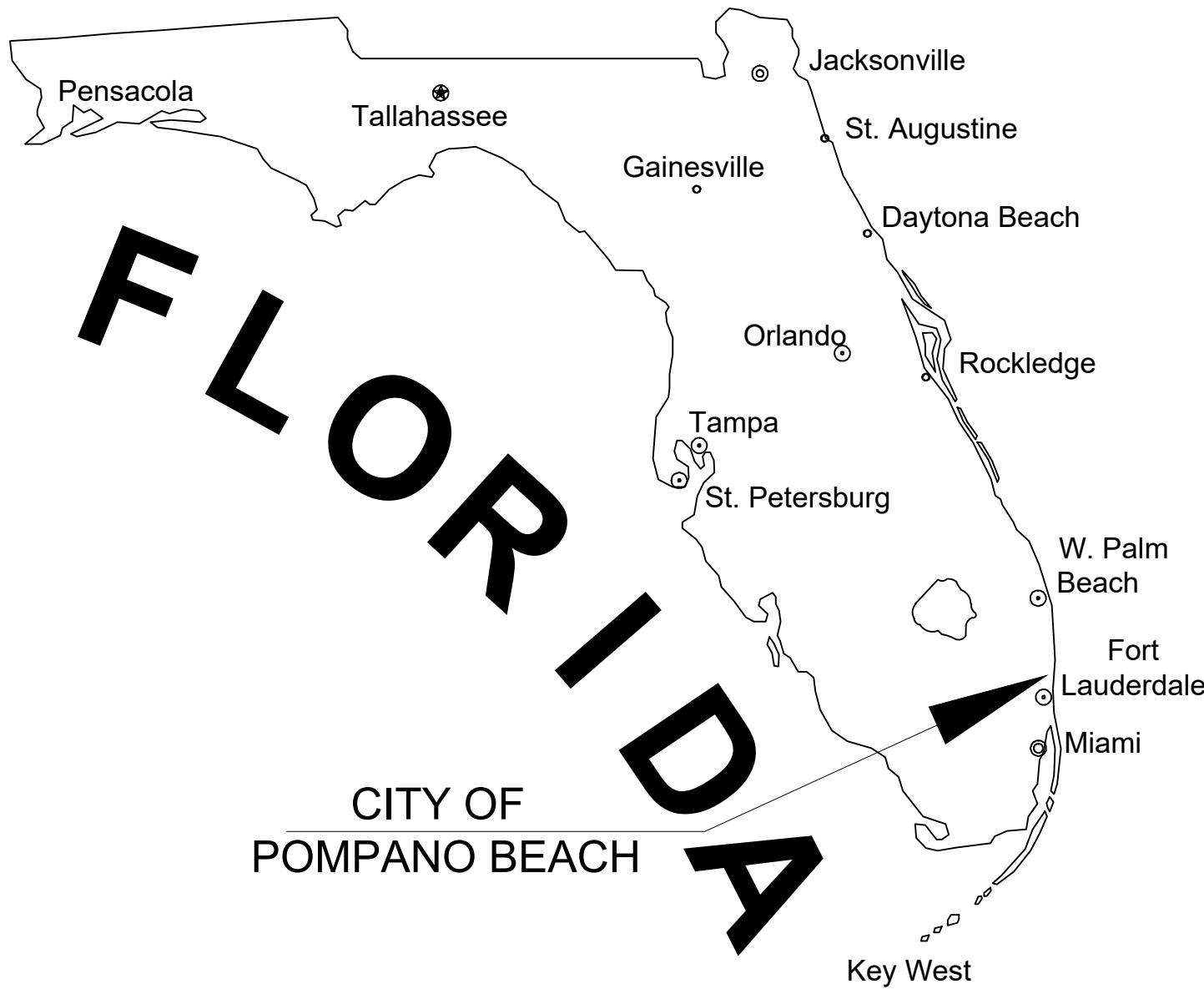


PRELIMINARY PLANS FOR

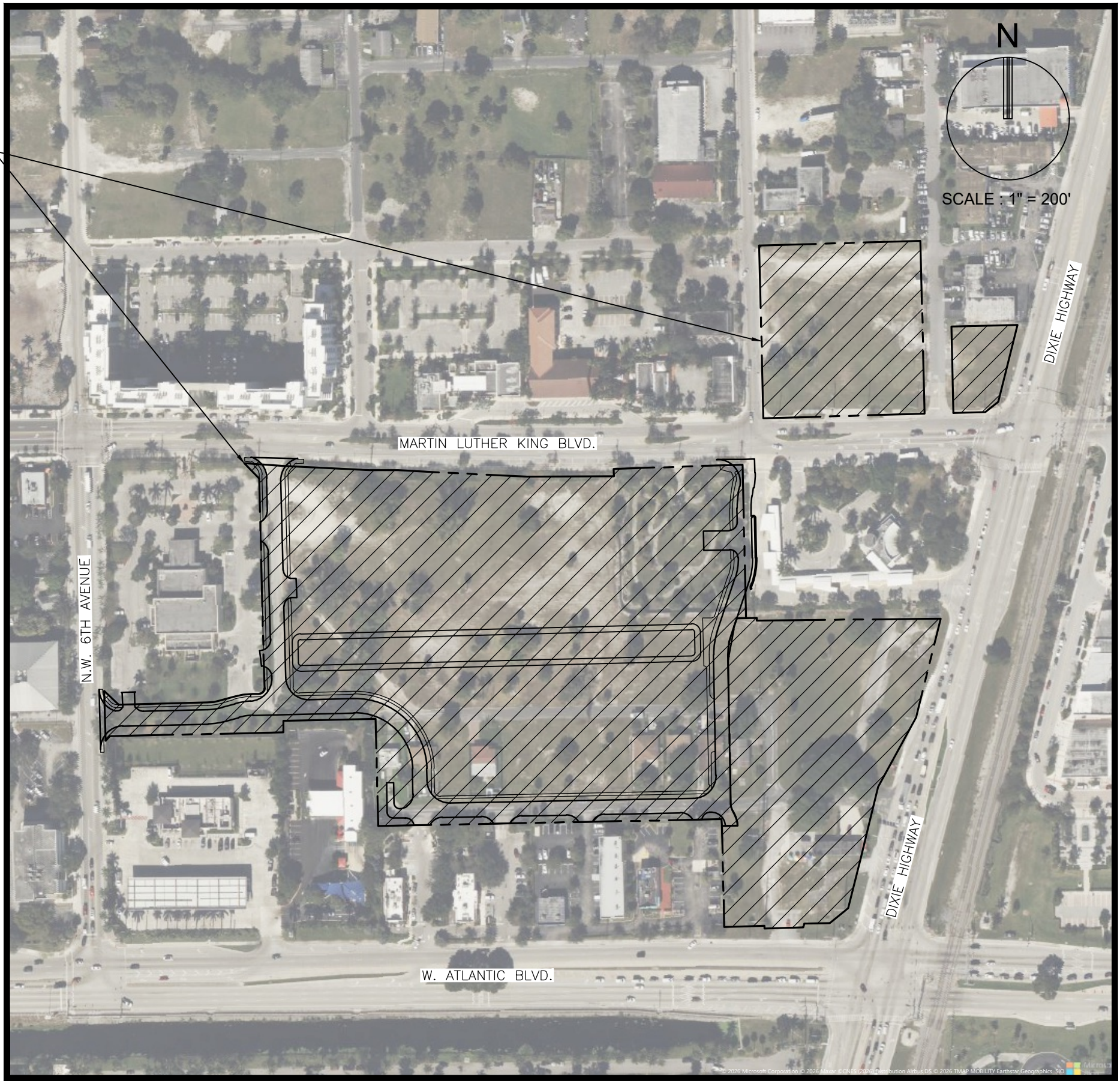
DOWNTOWN POMPANO - PHASE 1

INFRASTRUCTURE IMPROVEMENTS

MARTIN LUTHER KING BLVD AND NW 5TH AVE
CITY OF POMPANO BEACH, BROWARD COUNTY, FLORIDA



SITE LOCATION



LOCATION MAP
SECTION 35, TOWNSHIP 48 S, RANGE 42 E

INDEX OF SHEETS	
SHEET IDENTIFICATION	SHEET TITLE
GI-000	COVER SHEET
GI-001	LEGEND AND ABBREVIATIONS
GI-002	GENERAL CONSTRUCTION NOTES
GI-003	CONSTRUCTION SPECIFICATIONS
GI-004	OVERALL KEY PLAN
CD-101 - CD-109	DEMOLITION PLAN
CG-101	EROSION CONTROL PLAN
CG-505	EROSION CONTROL DETAILS
CP-101 - CP-109	PAVING, GRADING, AND DRAINAGE PLAN
CP-301	ROADWAY TYPICAL SECTIONS
CP-501 - CP-504	PAVING, GRADING, AND DRAINAGE DETAILS
CU-101 - CU-109	WATER AND SEWER PLAN
CU-501 - CU-505	WATER AND SEWER DETAILS
CM-101	PAVEMENT MARKING AND SIGNAGE PLAN
CM-501	PAVEMENT MARKING AND SIGNAGE DETAILS
LC-100	OVERALL KEY PLAN
LD-001 - LD-004	TREE DISPOSITION NOTES
LD-101 - LD-109	TREE DISPOSITION PLAN
LP-001	LANDSCAPE NOTES
LP-101 - LP-109	LANDSCAPE PLAN
LP-501	LANDSCAPE DETAILS
LI-101 - LI-109	IRRIGATION PLAN
LI-501	IRRIGATION DETAILS
LL-101 - LL-109	PHOTOMETRIC PLAN

RELATIONSHIP BETWEEN
NGVD 1929 AND NAVD 1988

DATUM	DIFFERENCE	ELEV.
NGVD 1929	+1.58 FEET	1.58'
NAVD 1988		0.00'

ALL ELEVATIONS SHOWN ON THESE PLANS ARE
BASED ON NAVD 1988 DATUM

FEMA FLOOD ZONE:

THE PROPERTY IS LOCATED WITHIN FLOOD ZONE
AH 10, AH 11, AH 12, AND X, AS SHOWN ON F.I.R.M.
NUM. 12011C0357J, BEARING A MAP EFFECTIVE
DATE OF 7/31/2024.

THESE PLANS MAY HAVE BEEN
REDUCED IN SIZE BY REPRODUCTION.
THIS MUST BE CONSIDERED WHEN
OBTAINING SCALED DATA.



PREPARED FOR:
RP POMPANO LLC
309 E. PACES FERRY ROAD, SUITE 825
ATLANTA, GA 30305



CHRISTOPHER T. ANDREONI, P.E.
FLORIDA REG. NO. 84184
(FOR THE FIRM)

PROJECT No. 15083.00 DATE: FEBRUARY 2026